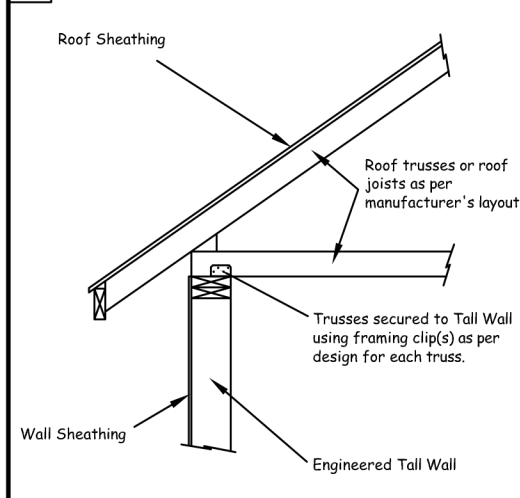
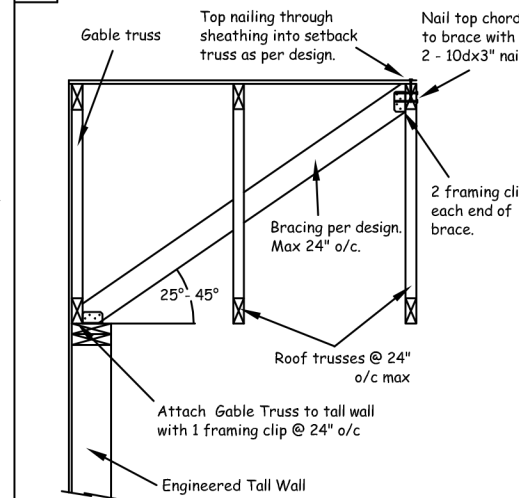


A-1 Top of Wall - Perpendicular Trusses

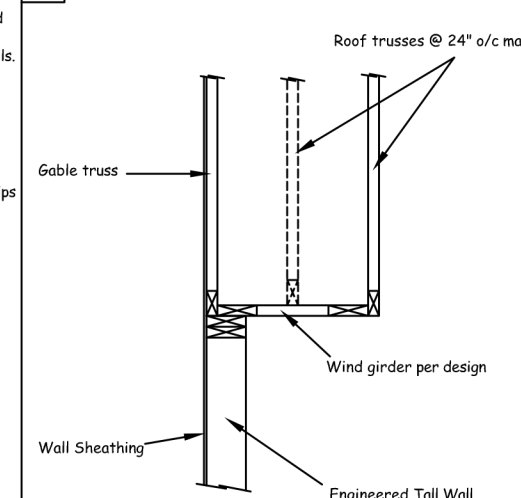


A-2 Top of Wall - Gable Truss Bracing



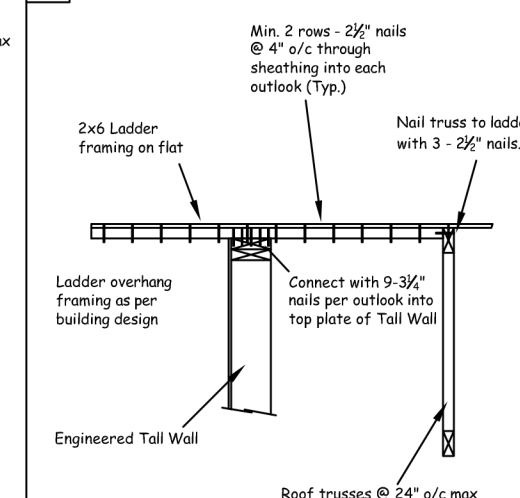
Note: See Table A & Gable Bracing Detail on layout for assembly details

A-3 Top of Wall - Wind Girder Bracing

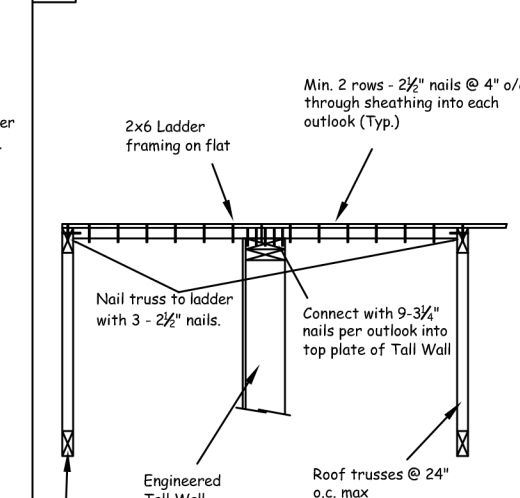


Note: See layout for Wind Girder to wall and truss connection details.

A-4 Top of Wall - Gable End Wall



A-5 Top of Wall - Between Trusses



STANDARD INSTALLATION PROCEDURES

- Block all framing vertically at a maximum of 8' o/c spacing No. 2 SPF or better unless otherwise noted on the layout.
- All additional blocking, trimmers, plates, etc. not specified shall be SPF No.2 or better of same nominal size as the Tall Wall.
- Top & bottom plates must be offset spliced if full length pieces are not available.

STANDARD SHEATHING APPLICATION

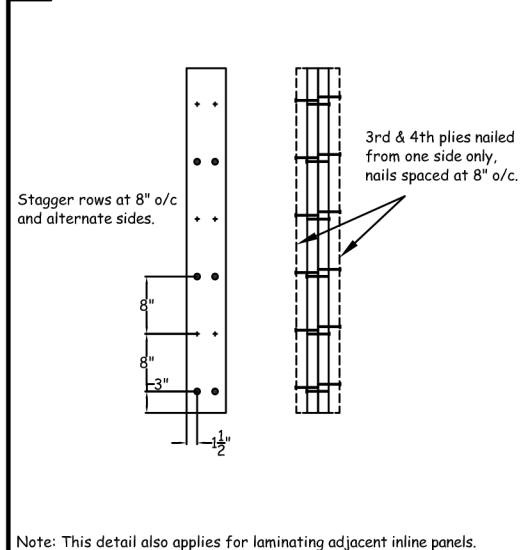
- Design assumes minimum of 3/8" sheathing on one face of the wall. Refer to the manufacturer's specifications for proper attachment for wind loads.
- For fire-rated sheathing refer to manufacturer's specifications for proper attachment for wind loads.
- For glass-mat gypsum sheathing refer to the manufacturer's specifications for proper attachment for wind loads.

B Built-Up Column Details

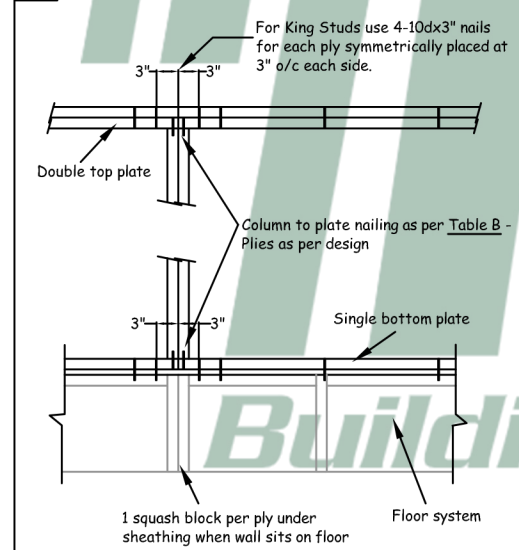
- 2ply common studs are not required to be laminated together.
- For nominal lumber, laminate plies using 10d 3" nails.
- For 1 3/4" LVL, laminate plies using 16d 3 1/2" nails.

TABLE B Built-up Column Nailing To Plates				
	1 ply	2 ply	3 ply	4 ply
2x4	3	5	7	9
2x6	4	7	11	14
2x8	5	9	13	17

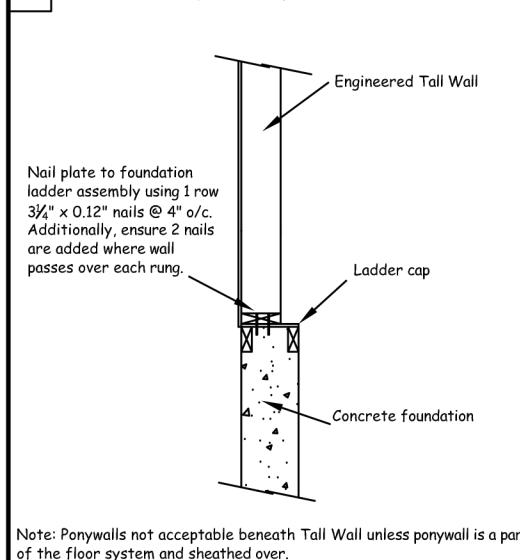
B-1 Built-up Column Lamination Pattern



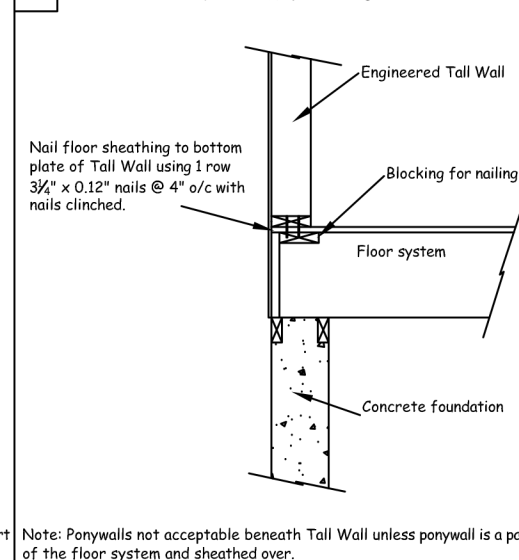
B-2 Built-Up Column to Wall Plates



B-3 Tall Wall to Foundation



B-4 Tall Wall on Floor Joists



Note: Ponywalls not acceptable beneath Tall Wall unless ponywall is a part of the floor system and sheathed over.

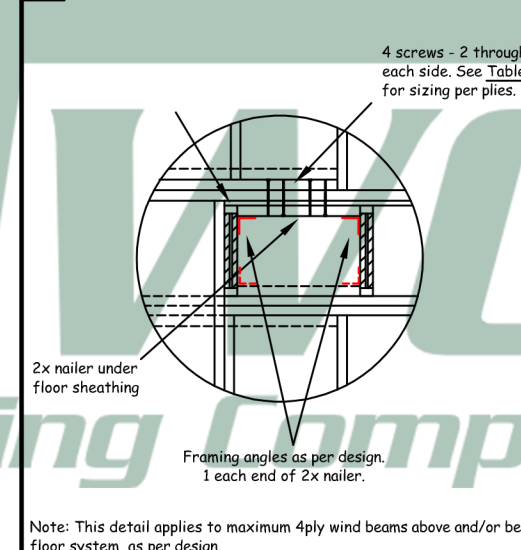
Note: Ponywalls not acceptable beneath Tall Wall unless ponywall is a part of the floor system and sheathed over.

C Wind Beam Connection Details

- All I-Joists require web stiffeners at connections for equal length to height of joist.
- Laminate Wind Beams using 2 rows 10d x 3" nails @ 12" o/c each side, ply to ply. For 1 3/4" LVL, laminate using 16d 3 1/2" nails.

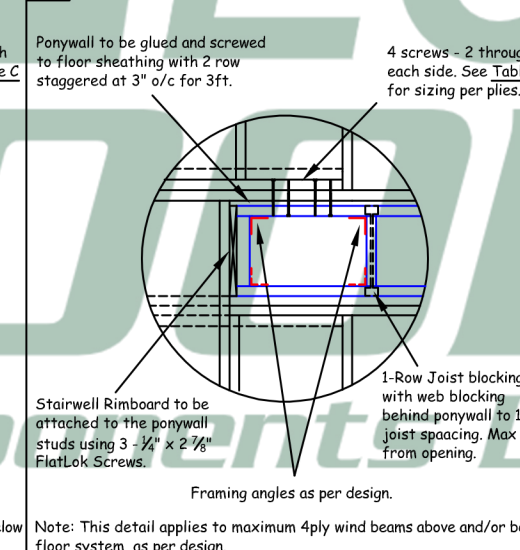
TABLE C Screw Size for End Connection			
	2 ply	3 ply	4 ply
Upper	5"	6 3/4"	6 3/4"
Lower	4 1/2"	6"	6 3/4"

C-1 Perpendicular Joist Connection



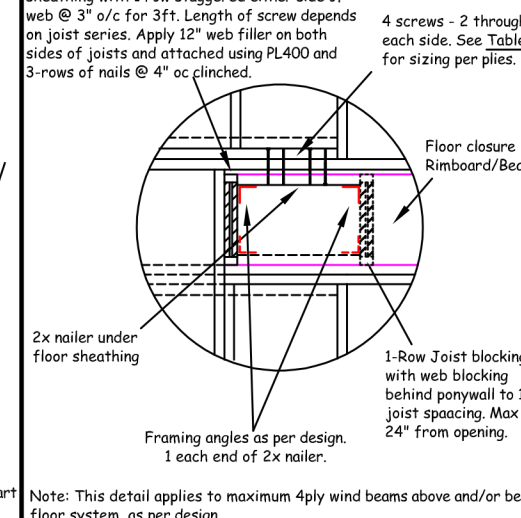
Note: This detail applies to maximum 4ply wind beams above and/or below floor system, as per design.

C-2 Ponywall Side Connection



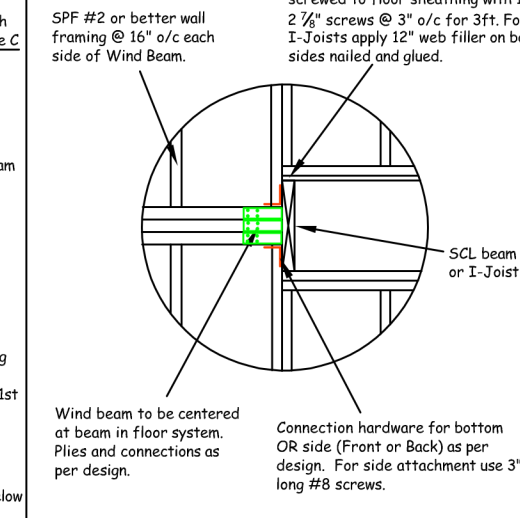
Note: This detail applies to maximum 4ply wind beams above and/or below floor system, as per design.

C-3 Rimboard/Beam Side Connection

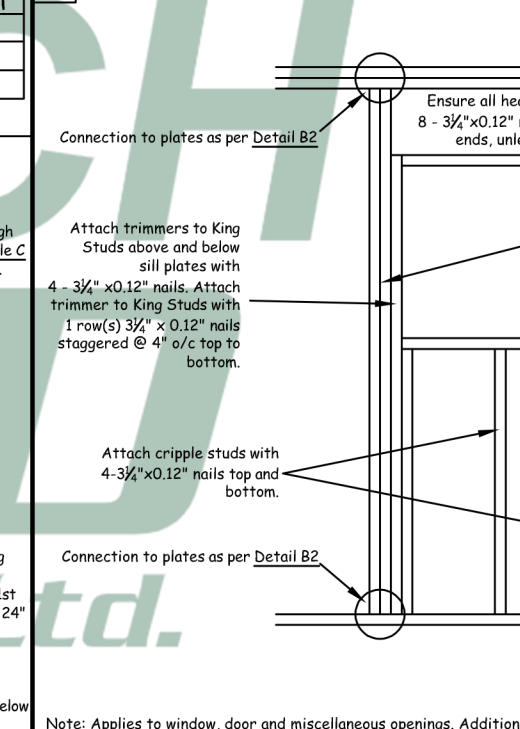


Note: This detail applies to maximum 4ply wind beams above and/or below floor system, as per design.

C-4 Centered Wind Beam Connection

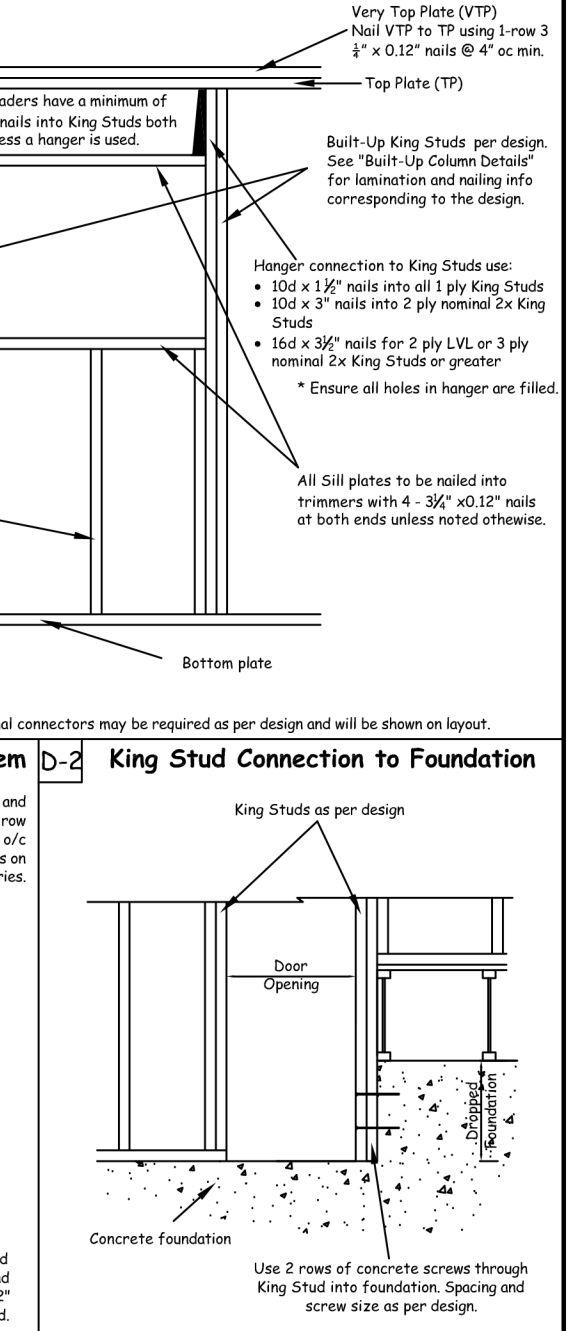


D Wall Opening Details



Note: Applies to window, door and miscellaneous openings. Additional connectors may be required as per design and will be shown on layout.

D-1 King Stud Connection to Floor System



D-2 King Stud Connection to Foundation

